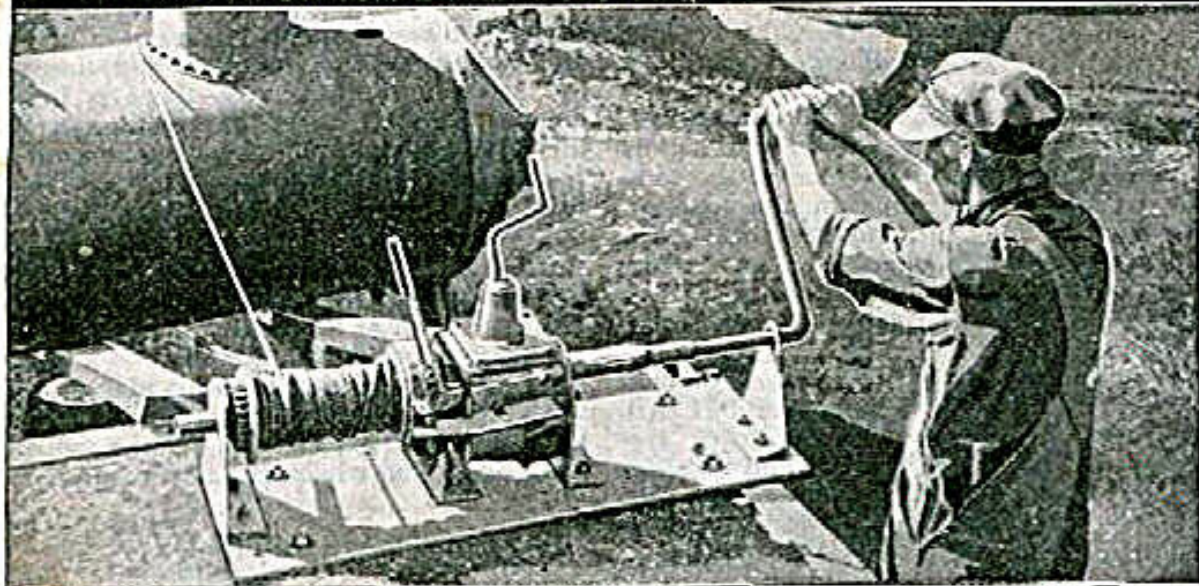
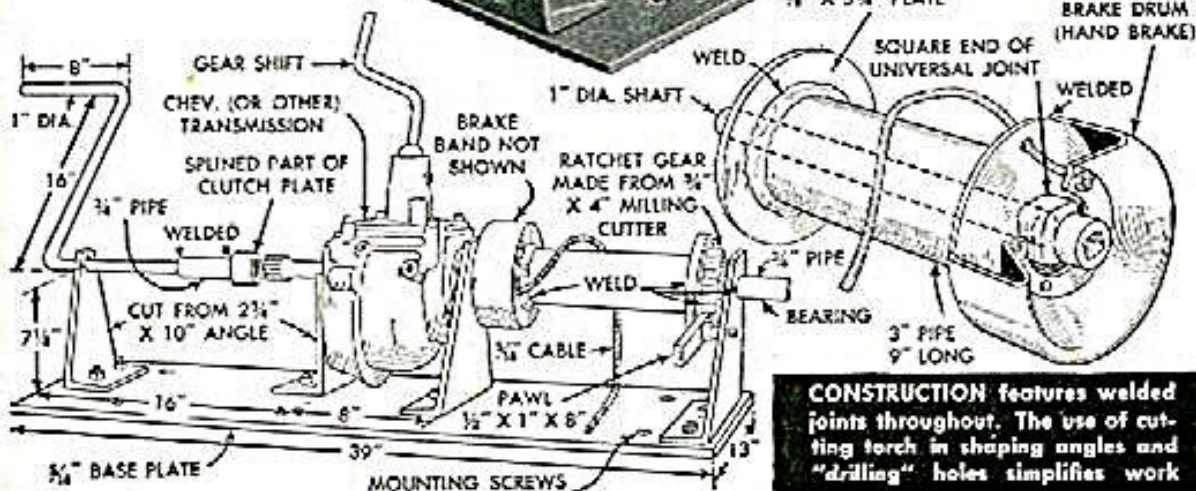
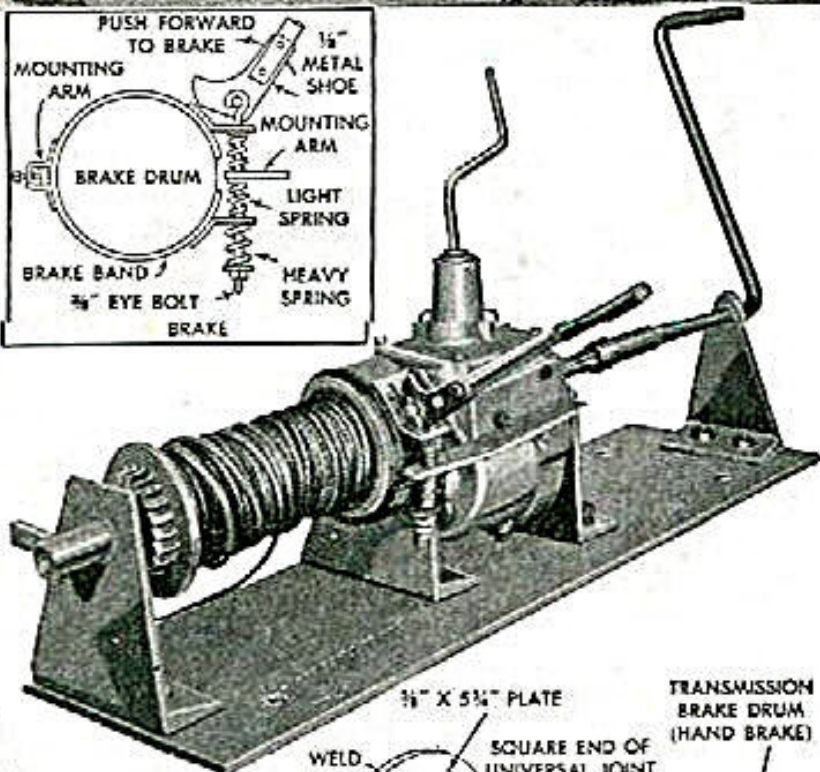
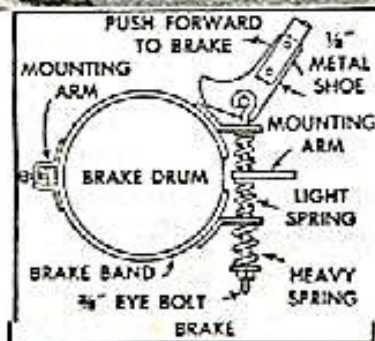


Powerful DRUM HOIST Made from Scrap



With this homemade hoist, you can lift loads weighing more than a ton. For each pound of pressure exerted on the handle, there is an upward pull of 30 lbs. on the load. Construction is largely torch cutting and welding. The base plate has holes for mounting, preferably on the bed of a truck, permitting full sweep of the handle. However, the hoist can be used on the ground if the handle is disengaged after each half swing. Although the brake mechanism is not essential, it is useful for dropping a load. An old auto transmission gives a free neutral position as well as a selection of gear ratios



CONSTRUCTION features welded joints throughout. The use of cutting torch in shaping angles and "drilling" holes simplifies work