

## FOUNDATION PLAN

DEEP PIER 14x24 LITTLE HOUSE 1/4"=1'-0"

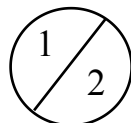
### General Notes:

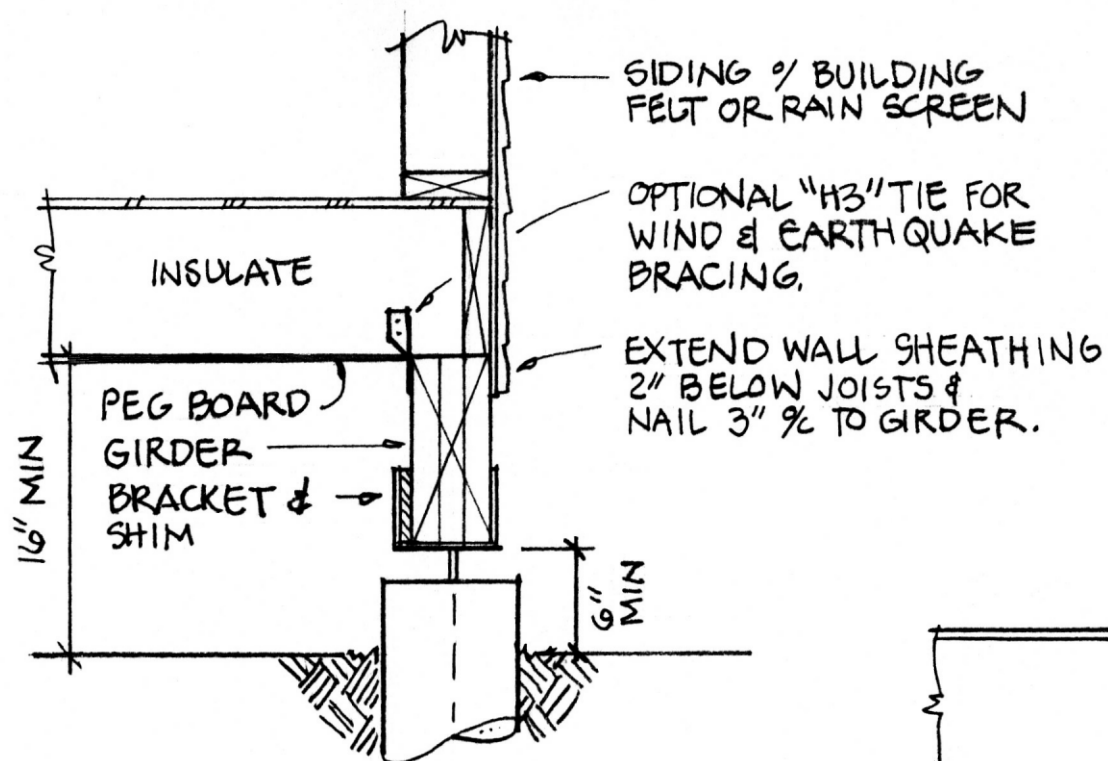
- Use Sonotube or Bigfoot pier forms to solid bearing at frost depth or below.
- In sandy soils increase footing size.
- Alternative for built-up beam: 3-1/8"x7-1/2" 24F-V4 Glulam engineered beam.
- Platform can be lengthened by adding additional piers so long as beam spans do not exceed 6'-0".
- Add additional pier and shorten span for heavy snow or tall loft.

### Alternative Deep Pier Foundation Plan

for 14' x 24' [Little House](#) or [Builder's Cottage](#) plans from [CountryPlans.com](#)

© [Planhelp.com](#), 2009

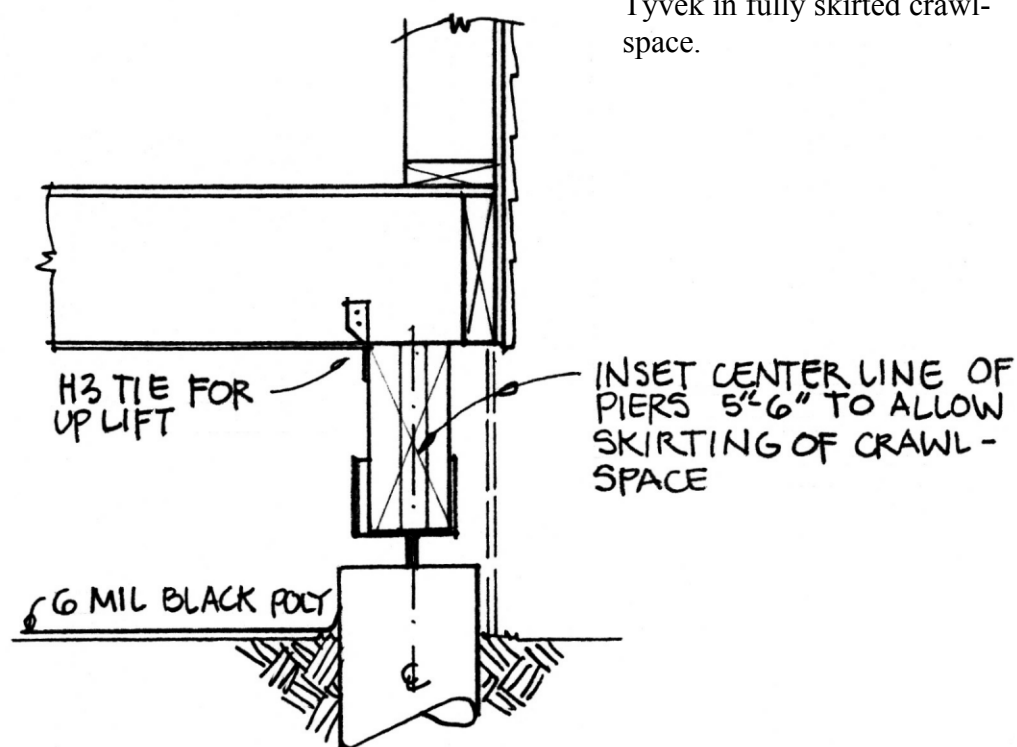




GIRDER @ WALL LINE  
1" = 1'-0"

### Girder Notes:

- Inset girder provides cleaner exterior but is not as well connected to building above. Provide ties such as H3 at every other joist as a minimum.
- Peg board at bottom of joists allows trapped moisture to escape while providing protection against critter damage. Could be eliminated or replaced by Tyvek in fully skirted crawl-space.



INSET GIRDER  
1" = 1'-0"

### Alternative Deep Pier Foundation Plan

for 14' x 24' [Little House](#) or [Builder's Cottage](#)  
plans from [CountryPlans.com](#)

© [Planhelp.com](#), 2009

