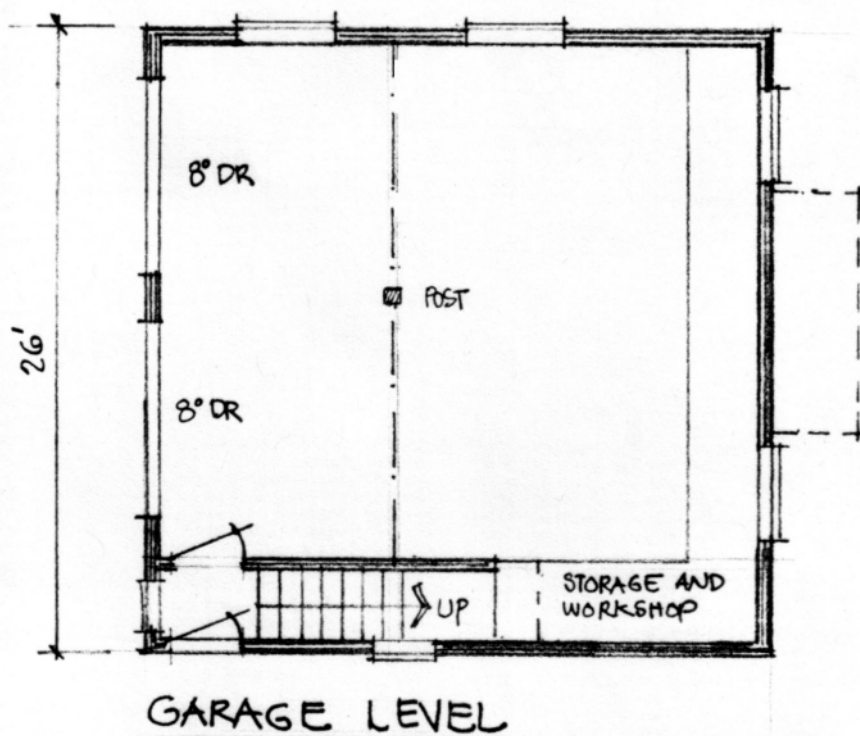


The balcony is supported by angled 6x8 braces to triple studs in wall below.

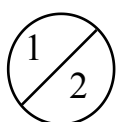
The main room would have an open cathedral ceiling with flat ceilings over the kitchen and stair area. There could be some attic storage above the kitchen.

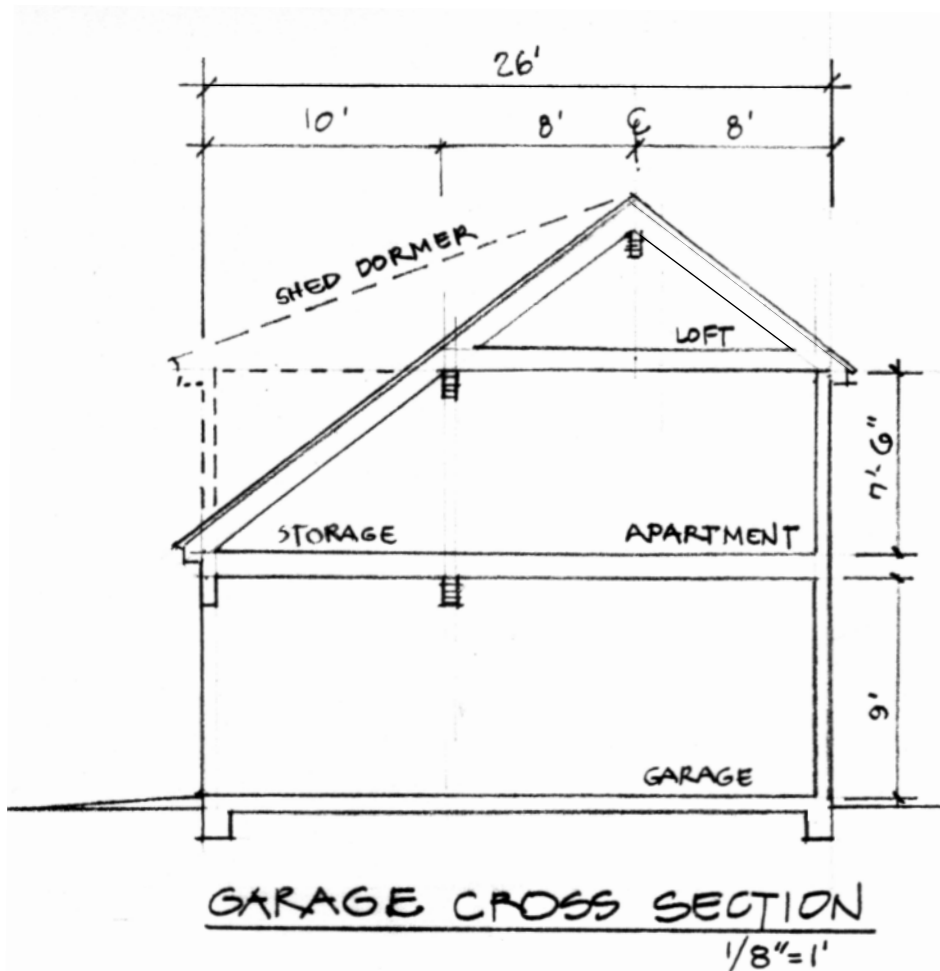
This roof would come as a truss package engineered for the local loads.



26' x 26' Garage With Small Apt. Above

www.countryplans.com
www.planhelp.com
4-21-07





26' x 26' Garage With Small Apt. Above

www.countryplans.com
www.planhelp.com
4-21-07

