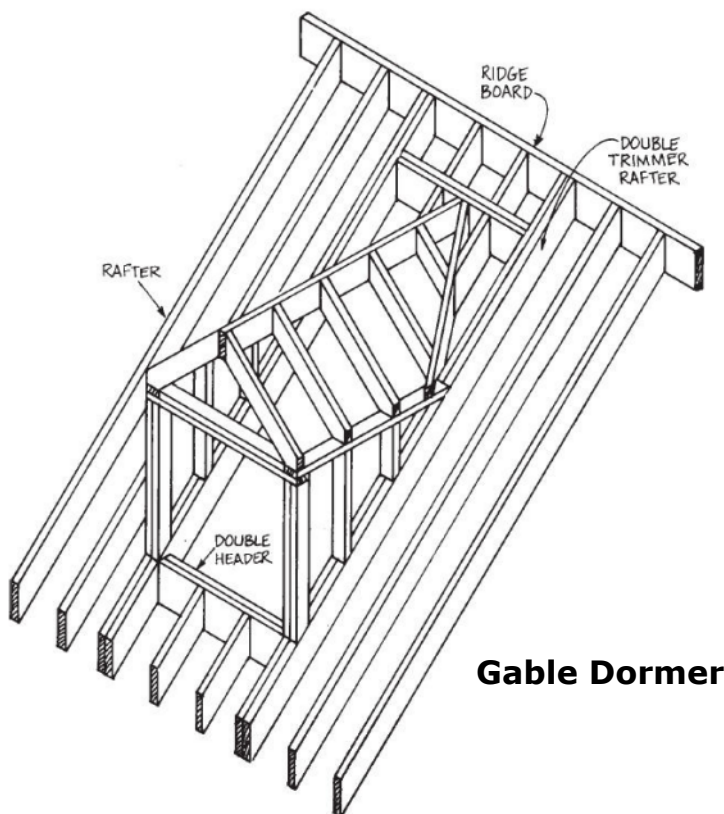
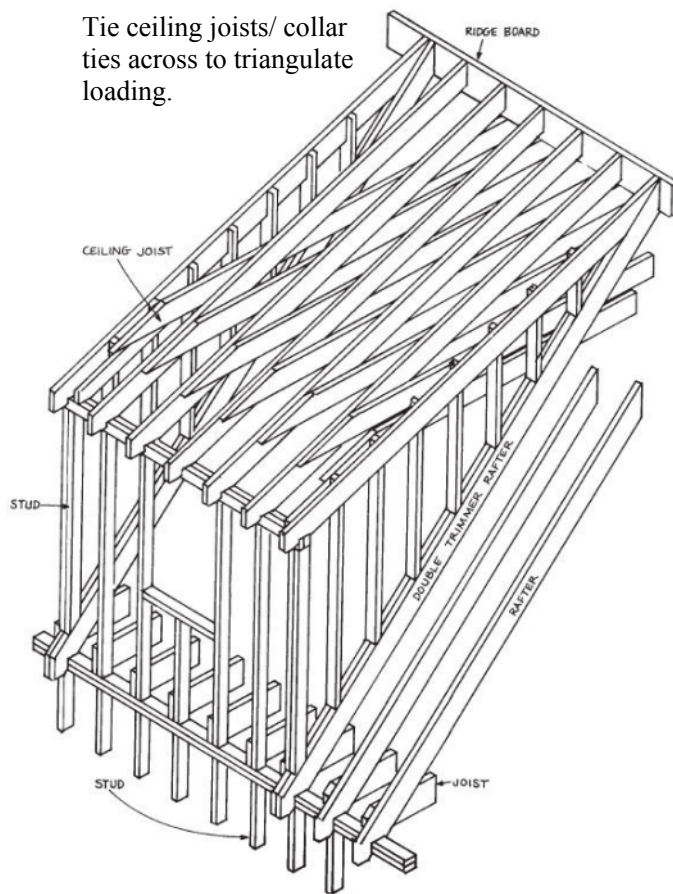


This roof framing system will work well in most parts of the U.S. and Canada. It uses standard joists with a collar tie at the ceiling. Use 2x12 rafters for higher insulation levels. Either one can carry heavy snow loads. Double rafters for a dormer. For a 6' wide gable dormer you could eliminate the downslope header shown in the lower diagram and set the wall or window directly on the wall plates. Set the sidewall plates of the dormer to match the ceiling height of the collar ties and carry these across.

Shed Dormer

Tie ceiling joists/ collar ties across to triangulate loading.



Gable Dormer

Rafter and Dormer Details For 20' wide Cottages

www.planhelp.com © 2007 www.countryplans.com