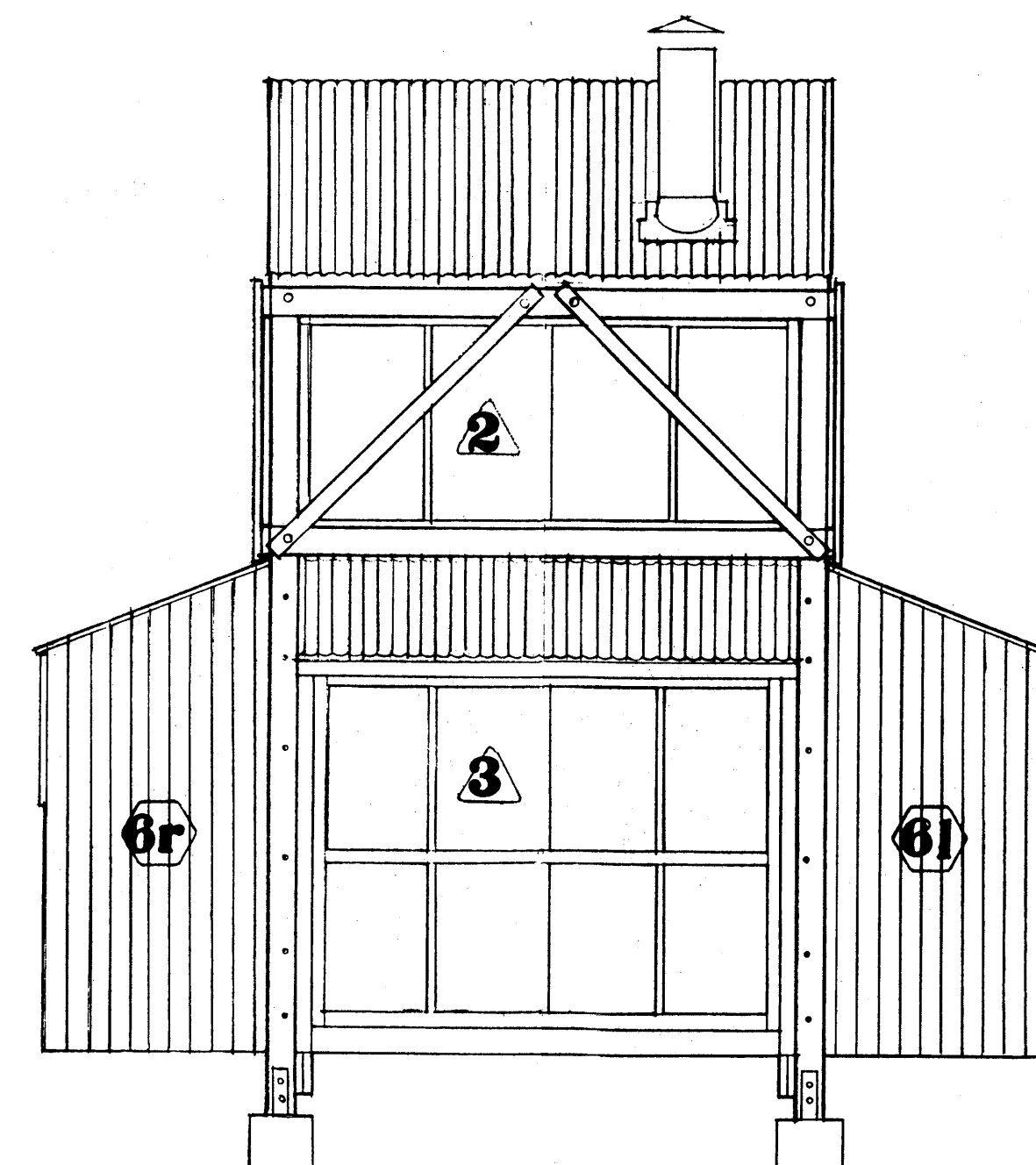
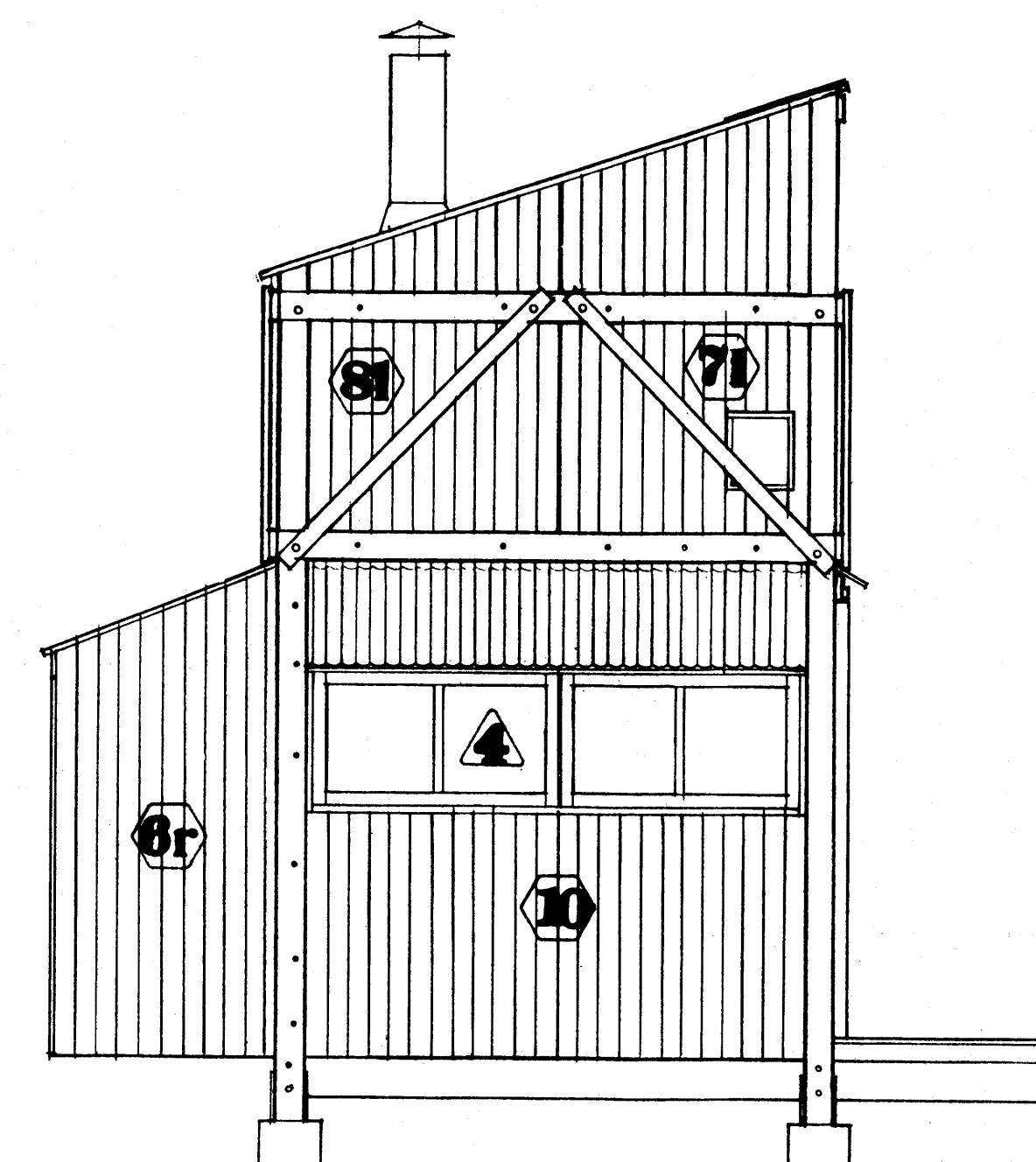


North elevation

West



South 3/8" = 1'-0"



East

## Family Circle

Vacation House  
designed by  
Jeffrey Milstein

### General notes

THIS HOUSE IS DESIGNED FOR RURAL AREAS SUCH AS FOREST OR MOUNTAIN AREAS. IF THERE IS A LOCAL BUILDING CODE HAVING CONSTRUCTION IS INTENDED, CHECK WITH THE LOCAL BUILDING OFFICIALS TO BE SURE THERE ARE NO INFRACTIONS.

THE LIVE LOAD DESIGN FOR THE FLOORS & ROOFS MEETS THE REQUIREMENTS SET FORTH IN THE UNIFORM BUILDING CODE: \* FLOORS 40 PSF. LIVE LOAD, ROOFS 15 PSF. SNOW LOAD.

THE HOUSE IS DESIGNED TO BE BUILT AS A SERIES OF PREFABRICATED PARTS, FABRICATED IN AN INDUSTRY WORK SPACE (VIE BUILT THE PROTOTYPE IN A BARN). THE PREFABRICATED COMPONENT PARTS ARE TRANSPORTED TO THE SITE (THE WHOLE HOUSE WILL FIT IN A 10' U-HAUL TRUCK) & BOLTED TOGETHER ON 4 PRE-POURED CONCRETE FOUNDATION PIERS.

THE HOUSE FEATURES: A PAIR OF SLIDING DOORS (WITH A PASS DOOR) TO OPEN THE HOUSE TO THE OUTSIDE; A SUGGESTED DESIGN FOR A SMALL KITCHEN/BATH CORE; A BUILT-IN BED/STORAGE UNIT & A SLEEPING LOFT.

THE COMPONENT PARTS CAN BE DIVIDED INTO 3 MAIN CATEGORIES: 1. THE STRUCTURAL FRAME & FOUNDATIONS; 2. THE PANELS; 3. INTERIORS & MECHANICAL EQUIP. BEFORE ATTEMPTING CONSTRUCTION, STUDY PLANS & ALL NOTES THOROUGHLY.

\* FOR MOST AREAS - CHECK LOCAL SNOW LOAD REQUIREMENTS

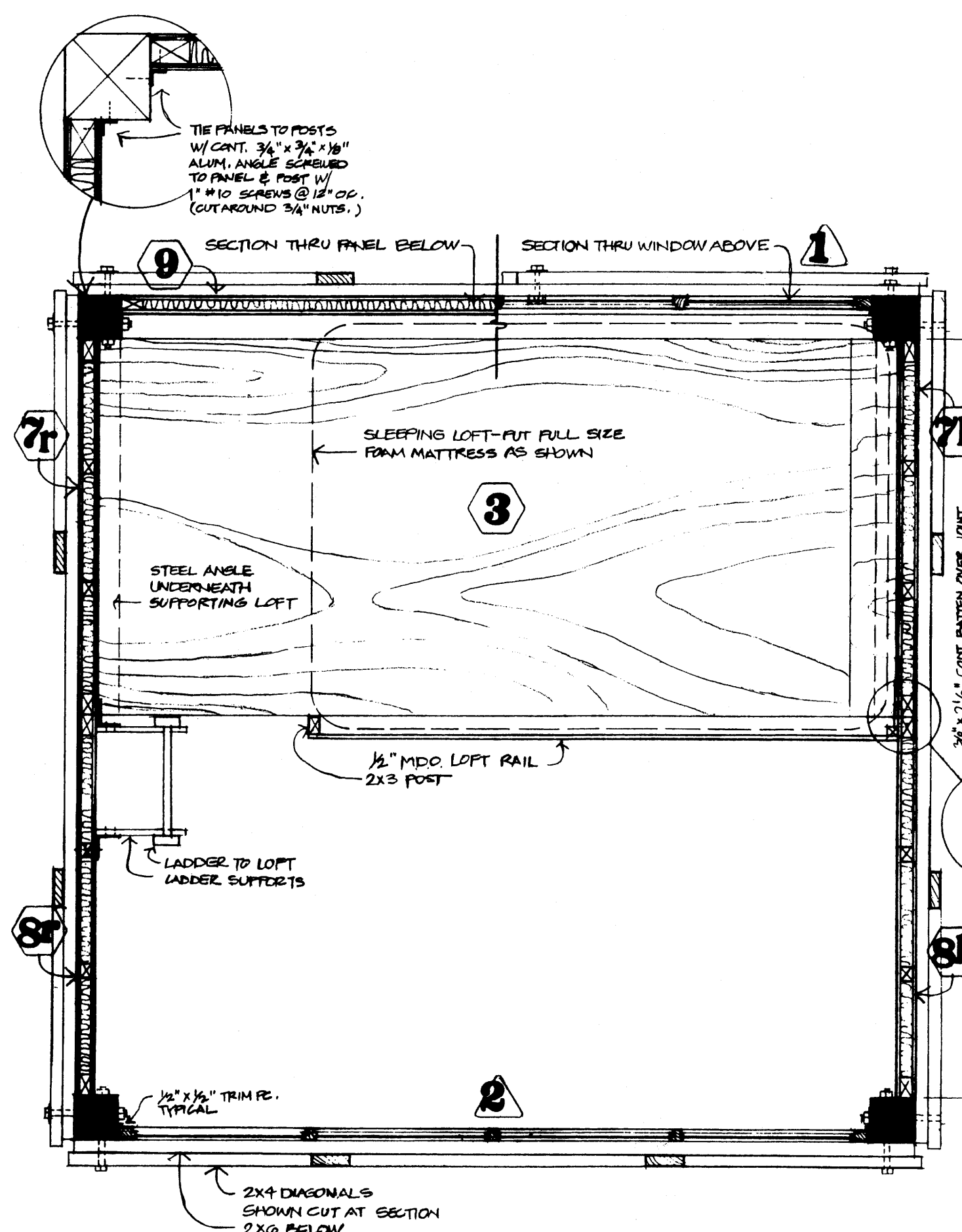
### abbreviations & symbols

- PREFABRICATED PANEL #
- WINDOW #
- DIAMETER
- CENTER LINE
- C.S.
- COUNTER SINK
- BR.
- EQUAL
- TYP.
- TYPICAL
- CONT.
- CONTINUOUS
- DIMS.
- DRAWING

### Index

- FLOOR PLANS, ELEVATIONS & NOTES
- STRUCTURAL FRAME & FOUNDATIONS
- PANEL & WINDOW PREFABRICATION
- SECTIONS, DETAILS & ASSEMBLY SEQUENCE
- MATERIALS LIST, INTERIORS & MISC.

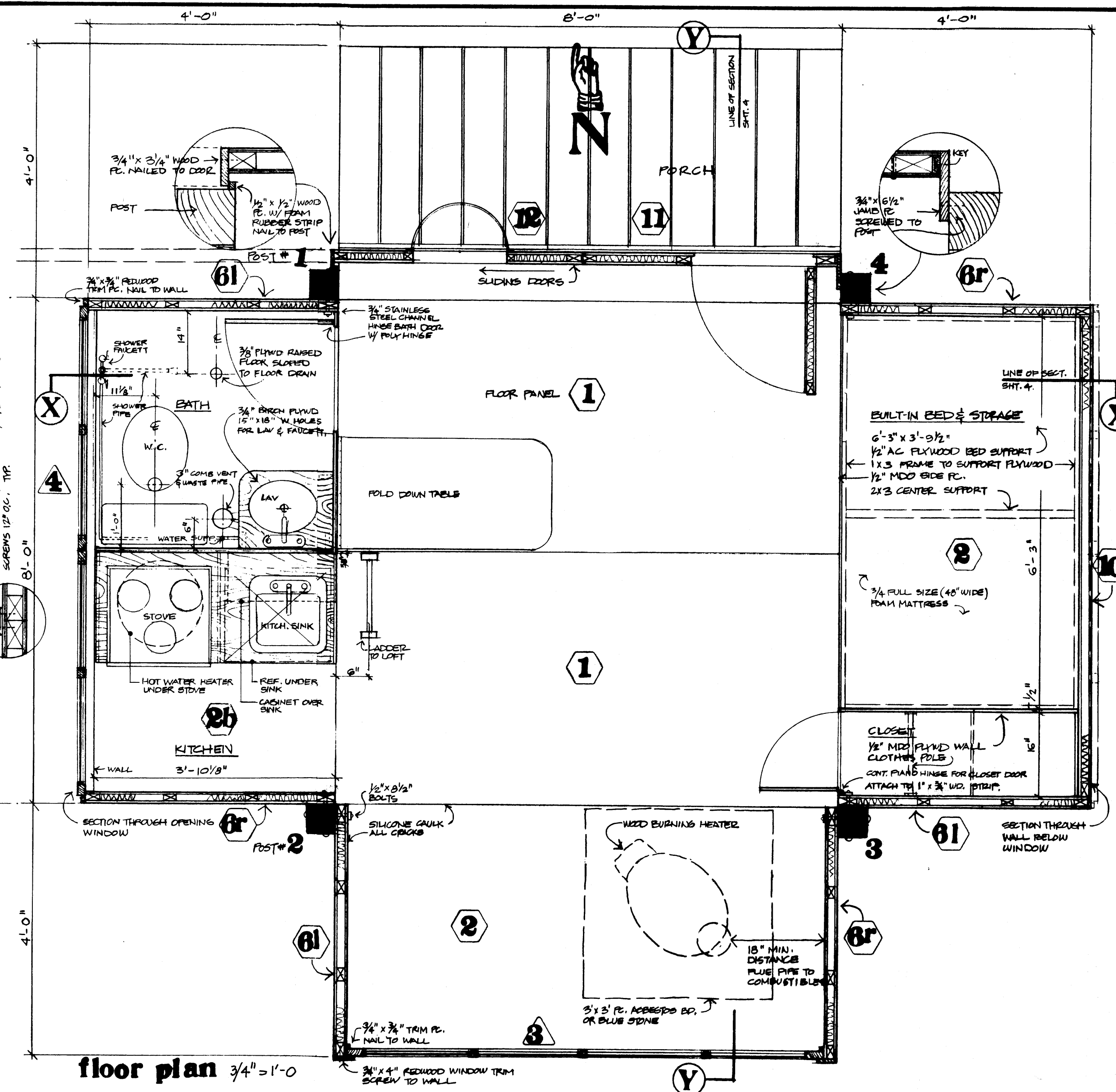
PAGE  
1  
2  
3  
4  
5  
6



loft plan

### NOTICE:

These plans are out of date and are not offered for construction purposes. This structure was not designed for and does not meet building code standards. They are offered only for historical and artistic interest. 2006 www.PlanHelp.com



floor plan 3/4" = 1'-0"