

panels

FLOOR & ROOF PANELS:
USE DOUGLASS FIR-LARCH, NO 2, 2X4'S
FOR THE JOISTS IN THE FLOOR & ROOF PANELS.
THE FLOORS TOP PLYS ARE 5/8" UNDERLAYMENT PLYWD.
BOTTOMS ARE 1/4" AC PLYWD, (EXT. GLUE)
THE ROOFS HAVE TOP OF 1/4" AC & BOTTOM PLYS OF
3/8" ROUGHSAWN FIR OR CEDAR (BOTH EXT. GLUE)

CUT A SHEET OF 3/8" EXT PLYWD INTO 3 1/4" WIDE X
4' LONG STRIPS. USE THOSE AS PANEL ENDS.

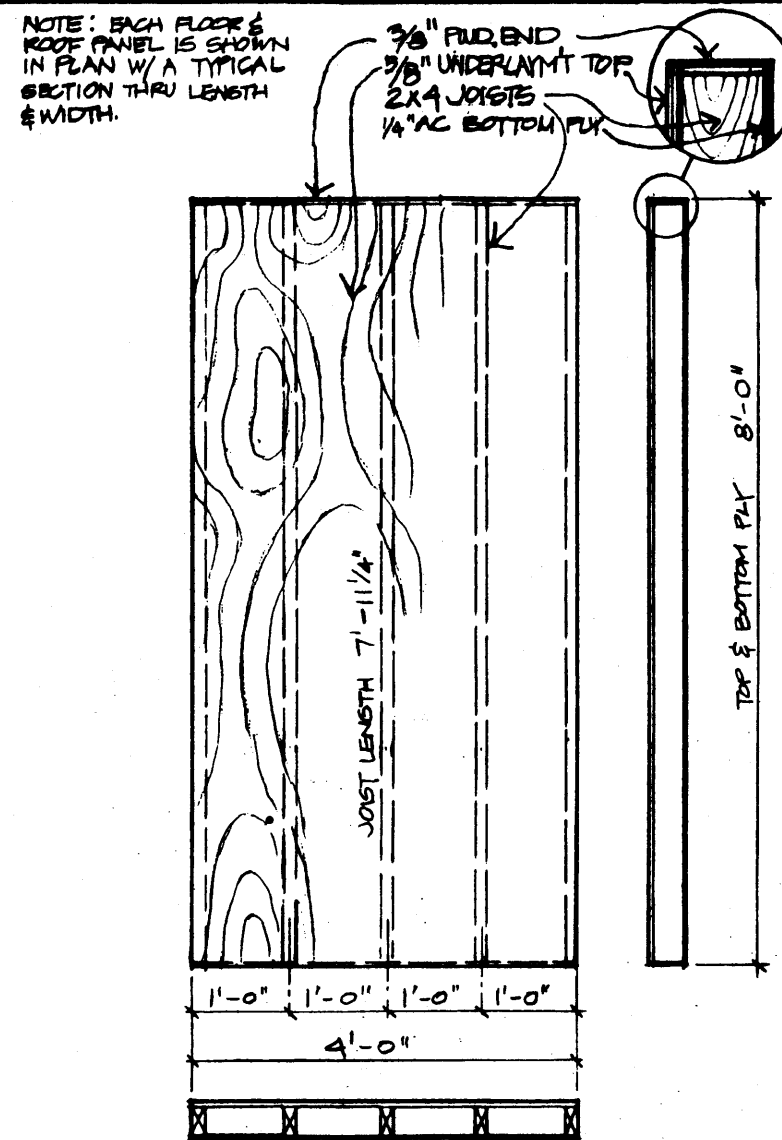
SET UP 2 SAWHORSES.
NAIL 2X4 FRAMES TO THE
TOP & LAY OUT FRAMES
ON THEM.

NAIL FRAME TOGETHER WITH PLYWD ENDS. APPLY
CONTINUOUS BEAD OF ELASTOMERIC GLUE (SEE P 5)
USING CAULK GUN. PLACE PLY ON
5" NAIL W/ GALV. BOX NAILS
USE 6d NAILS FOR 1/4"
& 3/8" PLYWD.
USE 8d FOR 5/8"
PLYWD.

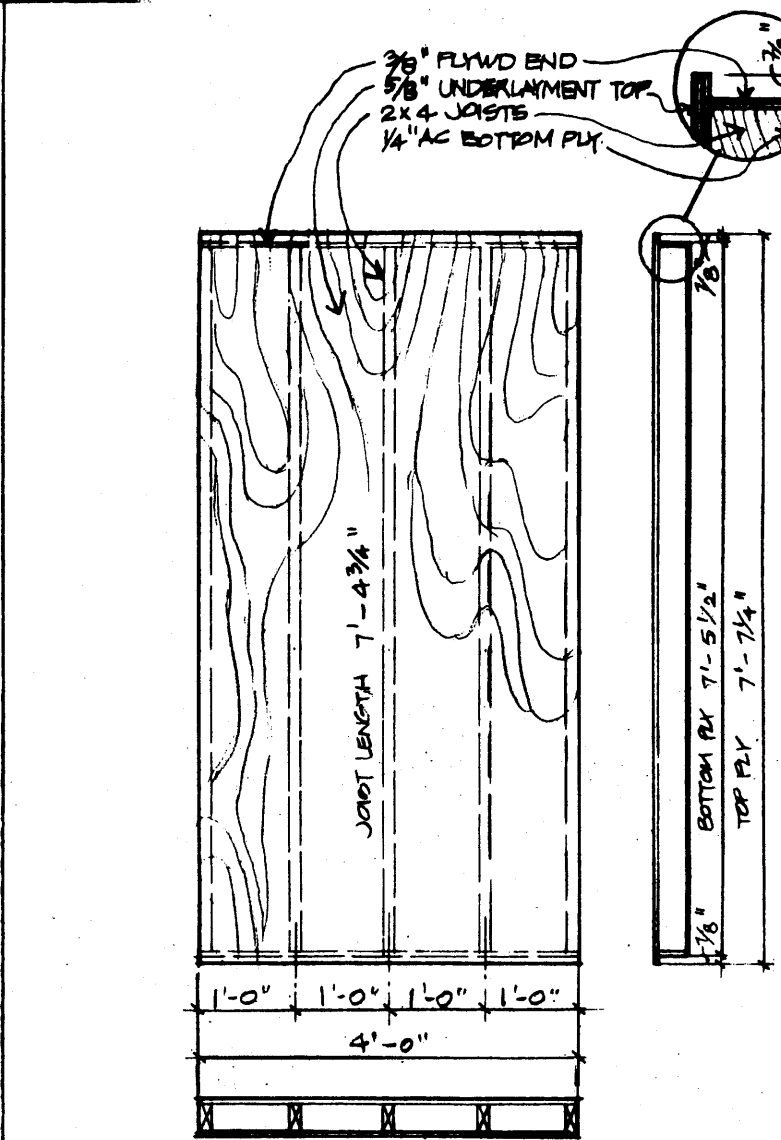
SPACE NAILS 12"
ON CENTER ON
ALL CENTER JOISTS
& 6" O.C. ALONG EDGES
& OPENINGS.

AFTER ONE SIDE IS NAILED, TURN PANEL OVER & PUT
3/4" FIBERGLASS INSULATION W/ FOIL (ALWAYS PUT FOIL
SIDE TOWARD INSIDE OF HOUSE) IN. FILL ALL SPACES
BETWEEN JOISTS.

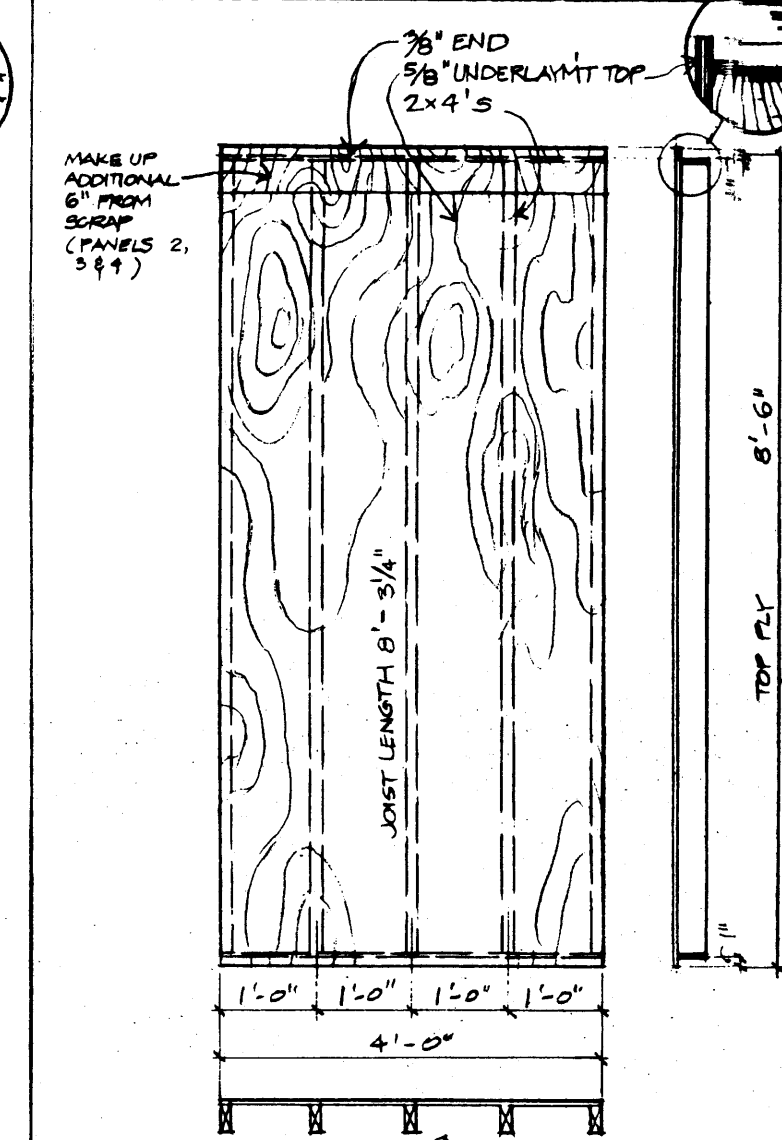
NOTE: IF YOU INTEND TO USE A ROOF COVERING OTHER THAN
2X6 CORRUGATED ALUMINUM (E.G. SHINGLES), USE 1/2" E PLY
DPTA STANDARD GRADE AS THE TOP OF THE ROOF PANELS
(INSTEAD OF 3/8" PLY)



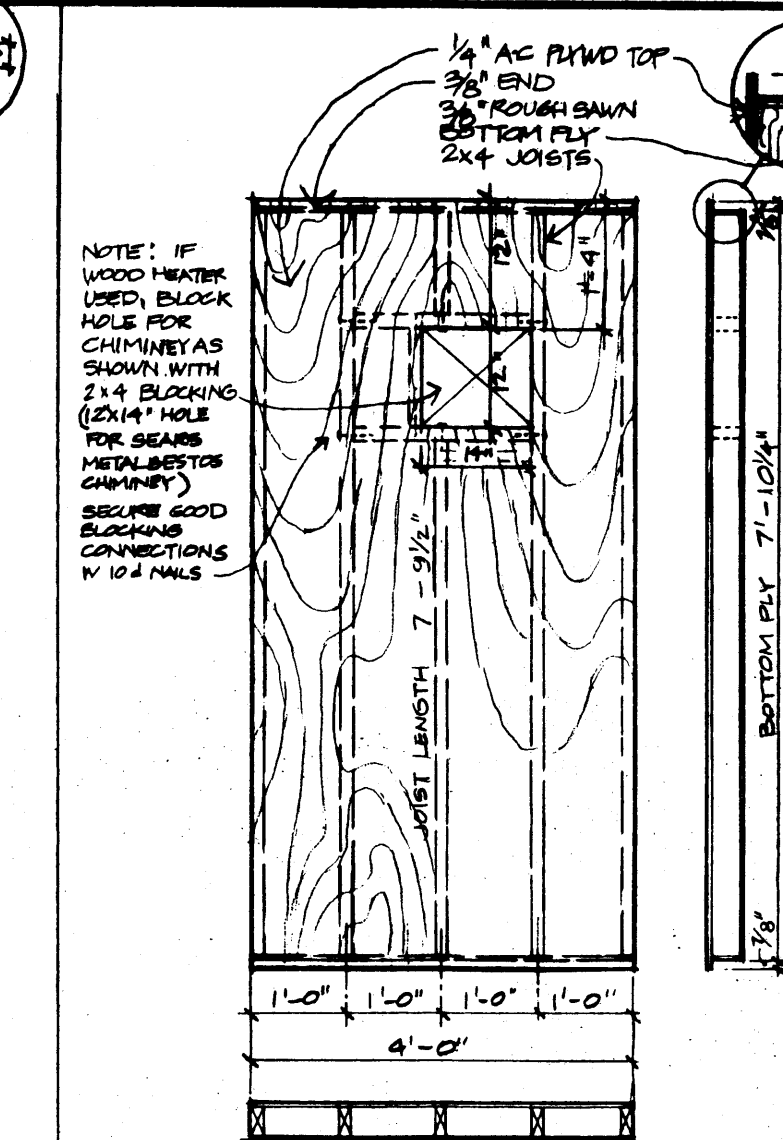
CENTER FLOOR 1 MAKE 2 1/2" = 1'-0"



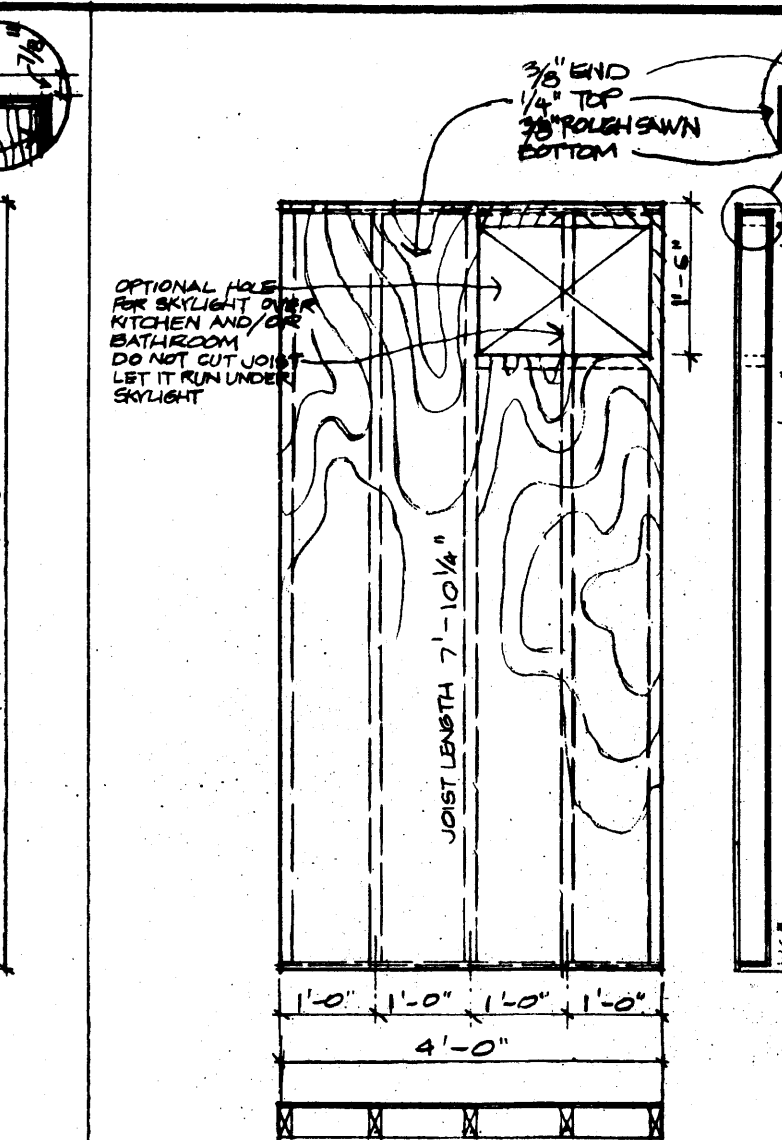
WING WALL FLOOR 2 MAKE 2 NO 2B



SLEEPING LOFT 3 MAKE 1

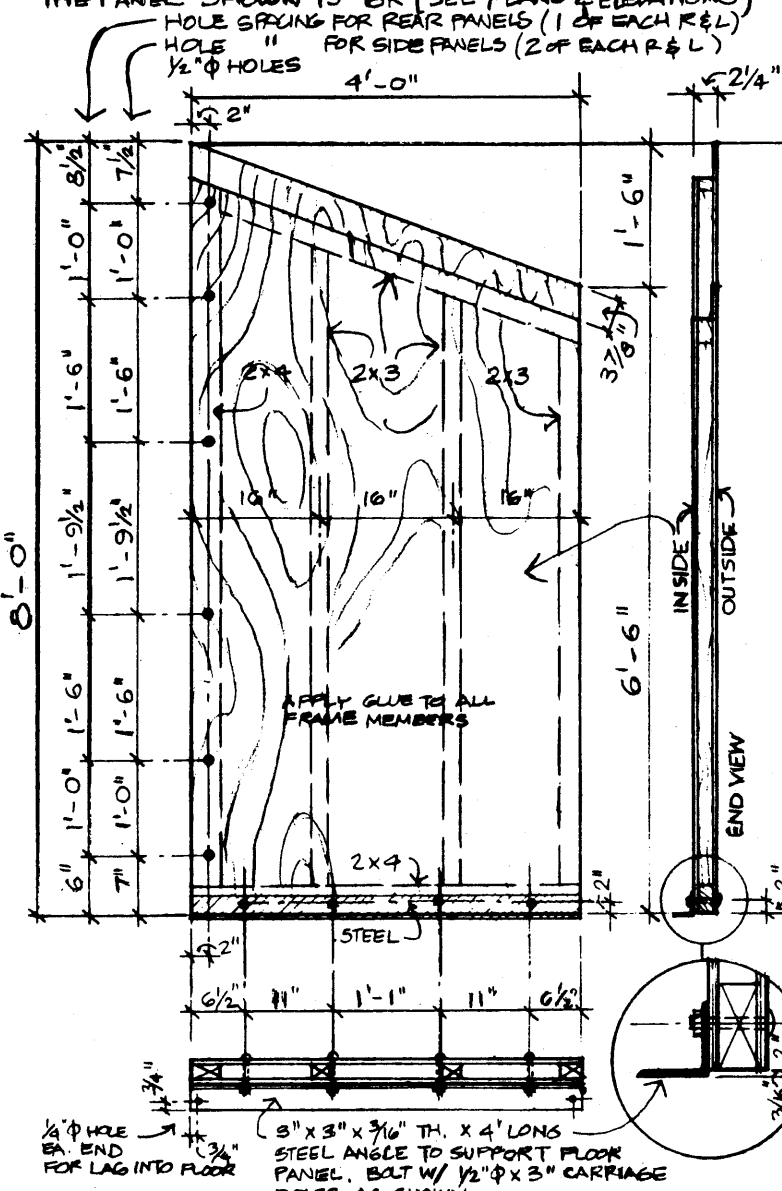


CENTER ROOF 4 MAKE 2

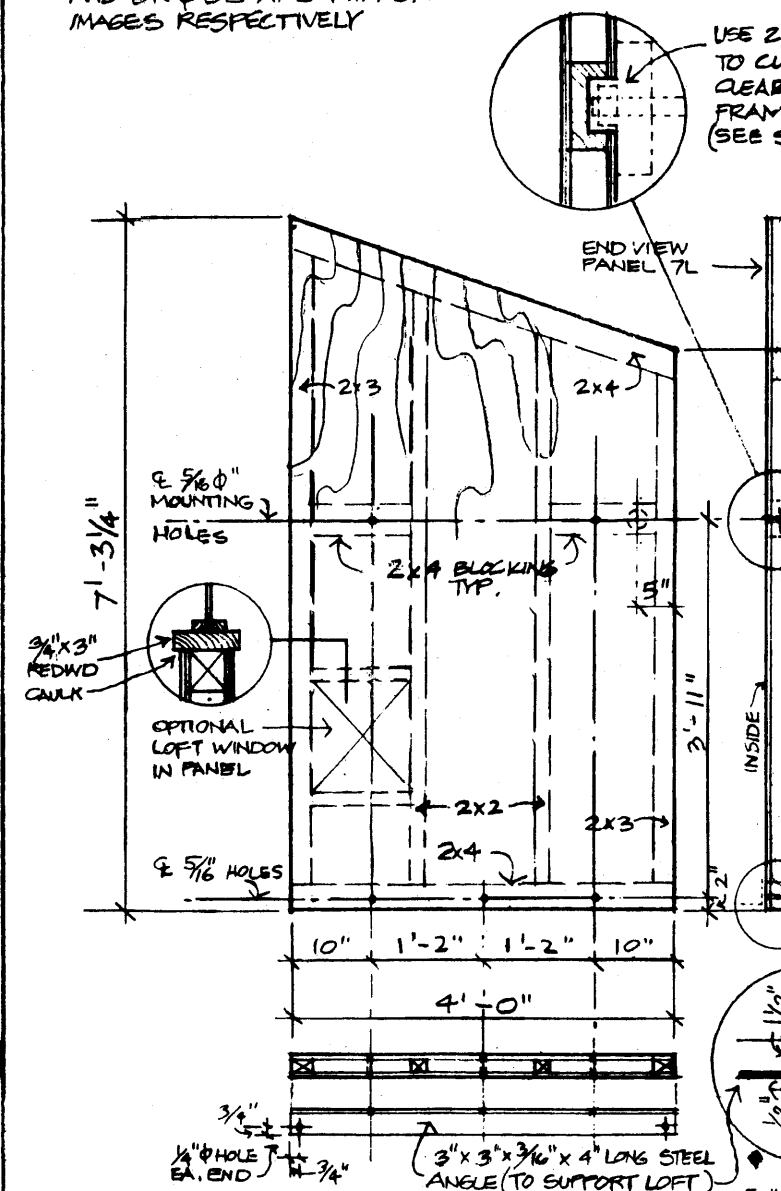


WING WALL ROOF 5 MAKE 3

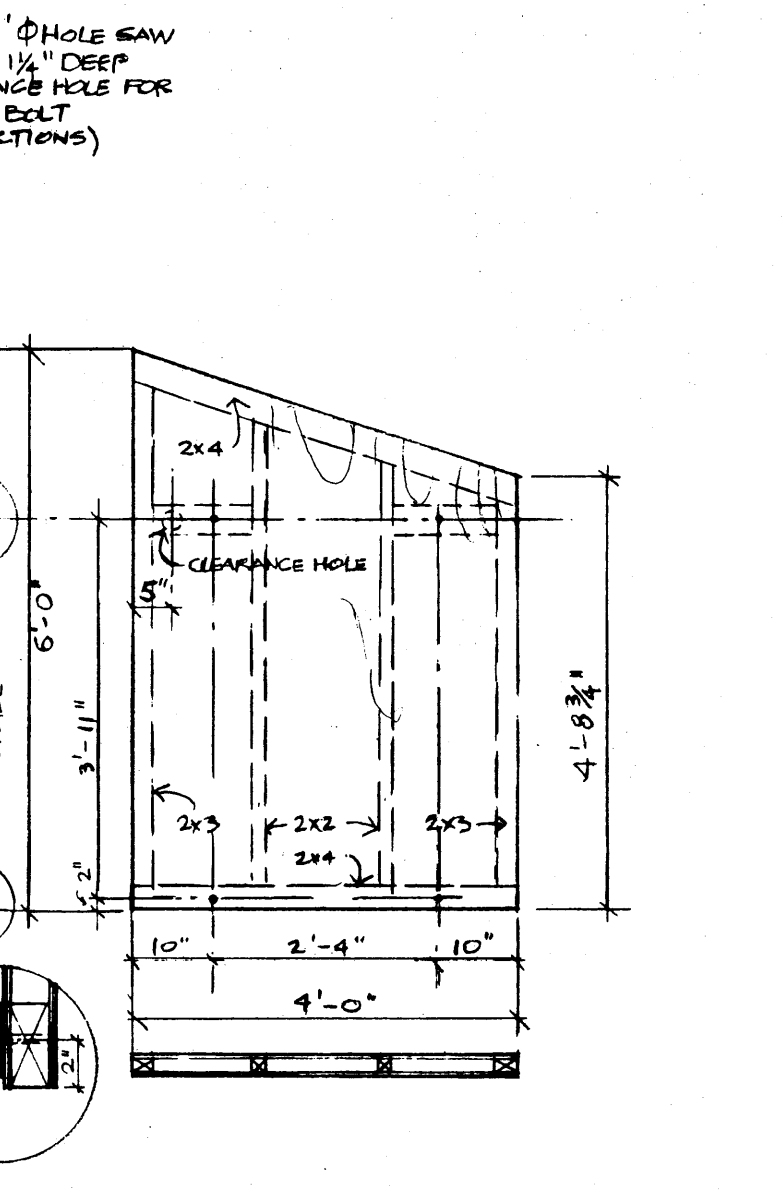
WALL PANELS:
WALL PANELS ARE CONSTRUCTED SIMILAR TO FLOORS &
CEILINGS. THE FRAMES ARE MADE OF 2X3'S, 2X3'S
& 2X4'S TURNED PARALLEL TO THE WALLS SO THAT THE
CAVITY SPACE IS 1 1/2" & THE WALL THICKNESS IS 2 1/4".
THE OUTER PLYS ARE 3/4" ROUGHSAWN FIR OR CEDAR.
303 SIDING EXT. DPTA PLYWD. (IN THE PHOTO TYPE
WE USED CEDAR BOTH SIDES WITH THE OUTSIDE
PLY HAVING SHALLOW GROOVES AT 4" O.C., CALLED
SHADOW GROOVE.) DE NAIL FRAME TOGETHER &
APPLY CONTINUOUS BEAD OF GLUE. (USE SERPENTINE
PATTERN ON 2X4'S.
ALSO, USE DOUBLE ROW
OF NAILS ON 2X4'S.) USE
6d GALVANIZED FOR NAILS
SPACED 12" O.C. FOR INTER-
MEDIATE MEMBERS & 6" O.C. FOR EDGES &
OPENINGS. TO NAIL PLYWOOD TO FRAMES, FILL
INTERIOR VOIDS WITH 1 1/2" TH. FIBERGLASS INSULAT-
ION W/ FOIL (7 1/2" O.K.).
AFTER PANELS ARE NAILED TOGETHER, THEY HAVE TO BE
DRILLED WITH MOUNTING HOLES. USE THE SAME JIG
USED TO DRILL THE 1/2" POST HOLES TO DRILL THE
1/2" HOLES IN PANELS (6" & 6"). USE THE 2X6 FRAME
MEMBERS AS JIGS TO DRILL 3/8" Ø MOUNTING HOLES
IN THE UPPER WALL PANELS. SEE THE ELEVATIONS
TO MATCH TH. PANELS TO THE APPROPRIATE FRAME
MEMBERS. COAT ALL PANEL EDGES & EXTERIOR
FACES EXPOSED TO WEATHER W/ A WATER REPELLENT-PRESERVA-
TIVE.



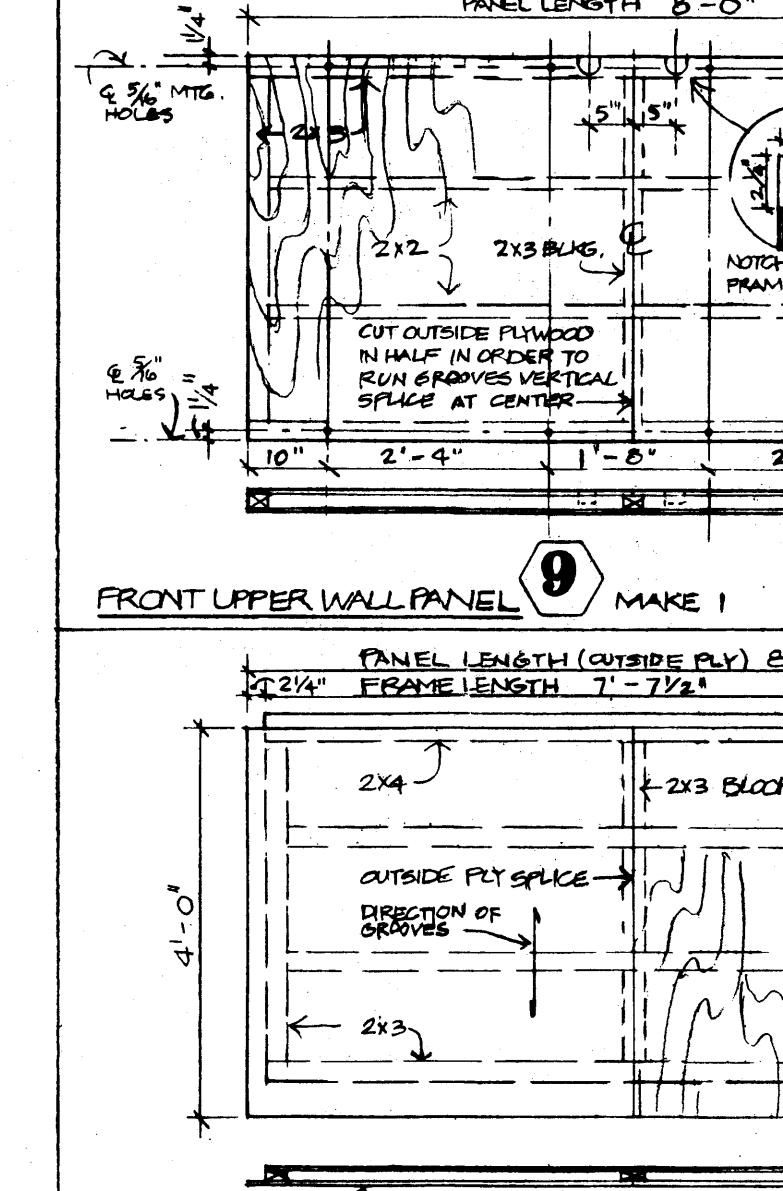
WING WALL 6 MAKE 3 OF EACH



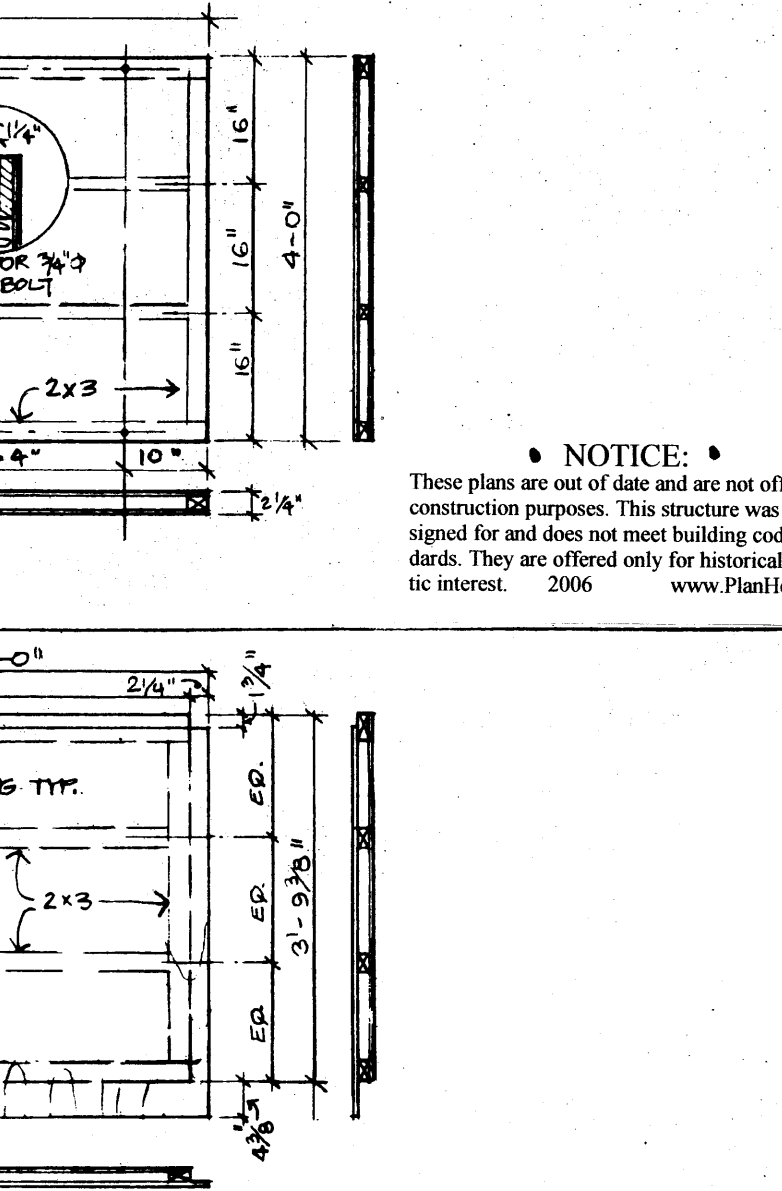
UPPER SIDE WALL PANELS 7 MAKE 1 OF EACH



LOWER SIDE WALLS 8 MAKE 1 OF EACH



FRONT UPPER WALL PANEL 9 MAKE 1



LOWER SIDE WALLS 10 MAKE 2

windows

WINDOW FRAMES ARE CUT FROM 2X3
& 2X4 REDWOOD. (WE USED A SMALL
BEARS TABLE SAW W/ DADO ATTACH.)

TO MAKE THE FRAMES CUT NOTCHES
OUT OF THE 2X3 & 2X4 (2X4 ON BIG WINDOW
ONLY) AS SHOWN AT RIGHT. (1/2" X 1/2")
SAVE THE STRIPS LEFT OVER FOR
GLAZING. MAKE THE CENTER
MULLIONS FROM 2X2 AS SHOWN

USE A 1/2" PADD TO CUT STRIP OUT
OF BOTTOM & TOP RAILS & OUT
OF THE ENDS OF CENTER MULLIONS
AS SHOWN.

APPLY RESORCINAL GLUE TO ALL
JOINTS & FIT TOGETHER AS
SHOWN.

WE GLAZED THE WINDOWS WITH
.080 TH. NON YELLOWING PLASTIC.
THIS MADE THEM EASY TO HANDLE
& TRANSPORT.

BETWEEN GLAZING, COAT FRAMES W/
A CLEAR PRESERVATIVE.

