

frame assembly

THE STRUCTURAL FRAME IS THE FIRST PART OF THE HOUSE TO GO UP ON THE FOUNDATIONS. IT WILL REQUIRE 3 OF 4 STRONG PEOPLE TO RIGHT THE POSTS. USE TEMPORARY BRACES TO HOLD POSTS UNTILL THE TRUSS IS CONNECTED. FOLLOW THE SEQUENCE SHOWN IN FIGS 2A THRU 2D. USE A STURDY 12" STRAPLIDER TO CONNECT TRUSS PIVOTS WITH BOLTS AS SHOWN IN FIG. 2D. STUDY THE ISOMETRIC & NOTE THE DIFFERENCES IN THE 2X4'S & 2X6'S. THE LONGER 2X4'S GO ON THE SIDES WHILE THE SHORTER ONES GO IN THE FRONT & BACK. THE 2X6'S MUST BE ARRANGED SO THAT THE SMALL (5/8") HOLES WILL MATCH THE APPROPRIATE PANELS. NOTE THAT THE 3/4" HOLES IN THE ENDS ARE OFF-SET FROM THE 6" (SO THAT THE BOLTS CAN PASS EACH OTHER). AT THE FRONT & BACK OF THE FRAME THE 2X6 IS MOUNTED SO THAT THE HOLES ARE ABOVE THE 2X4 WHILE ON THE SIDE THEY ARE BELOW (SEE FIG. 7.) AFTER ALL SIDES OF THE TRUSS ARE UP, BOLT FLOOR GIRDERS IN PLACE (NOTCHED SIDE UP) & THE ROOF GIRDER IN PLACE.

TIGHTEN ALL BOLTS SECURELY W/ 10" ADJUSTABLE WRENCH. (TIGHT!)

FIG. 2A

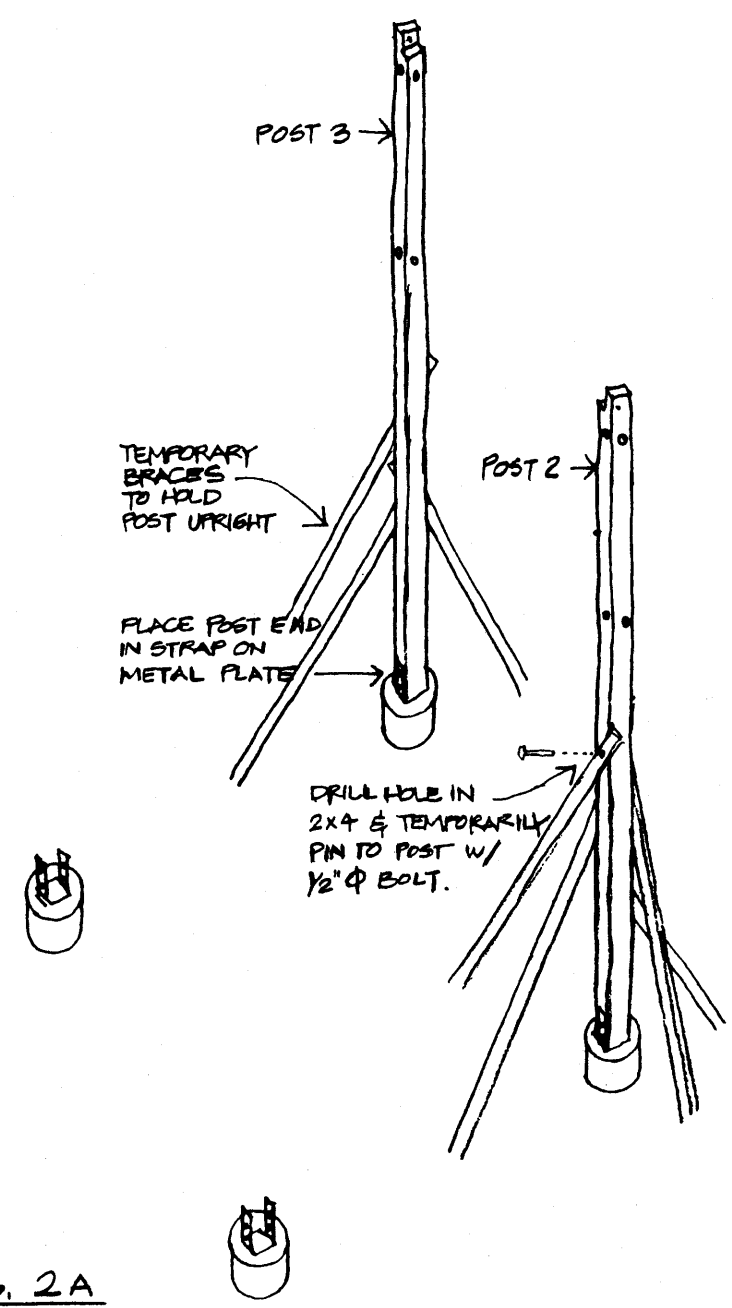


FIG. 2B

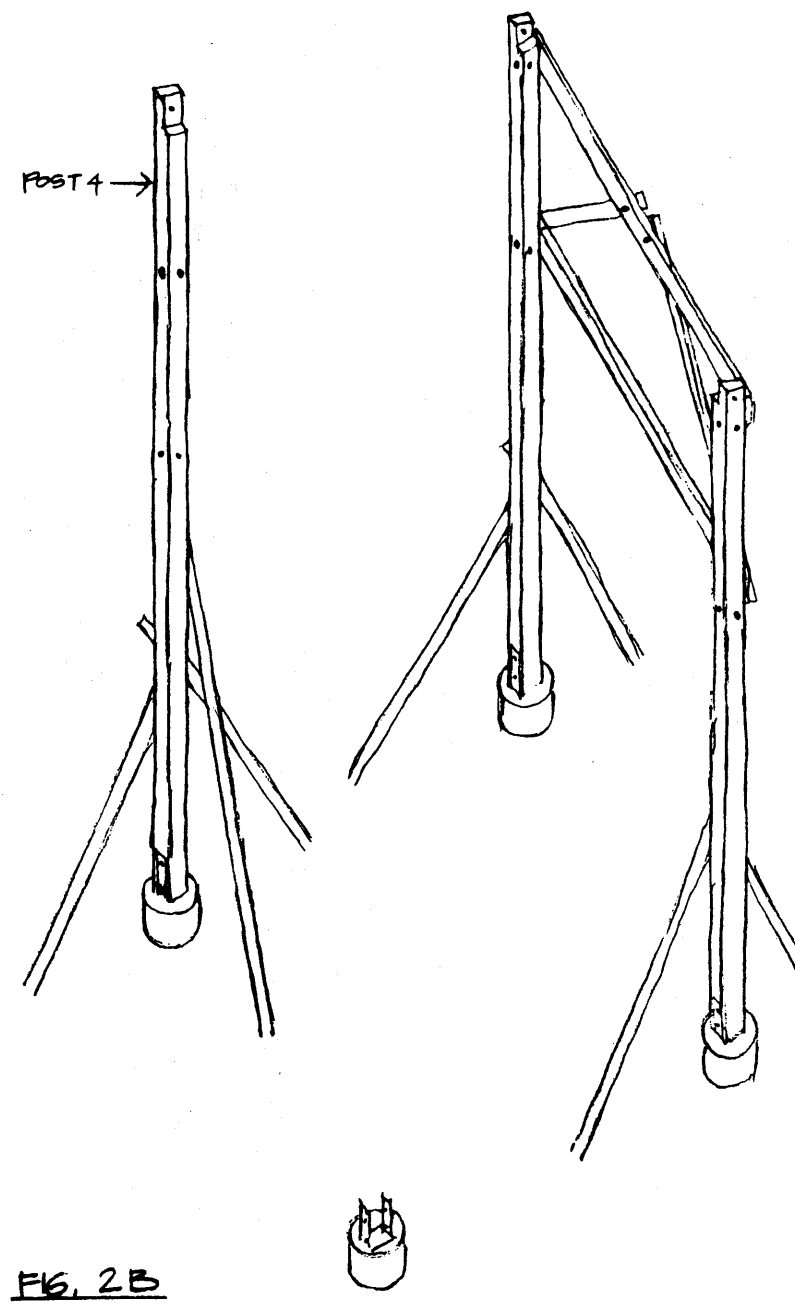
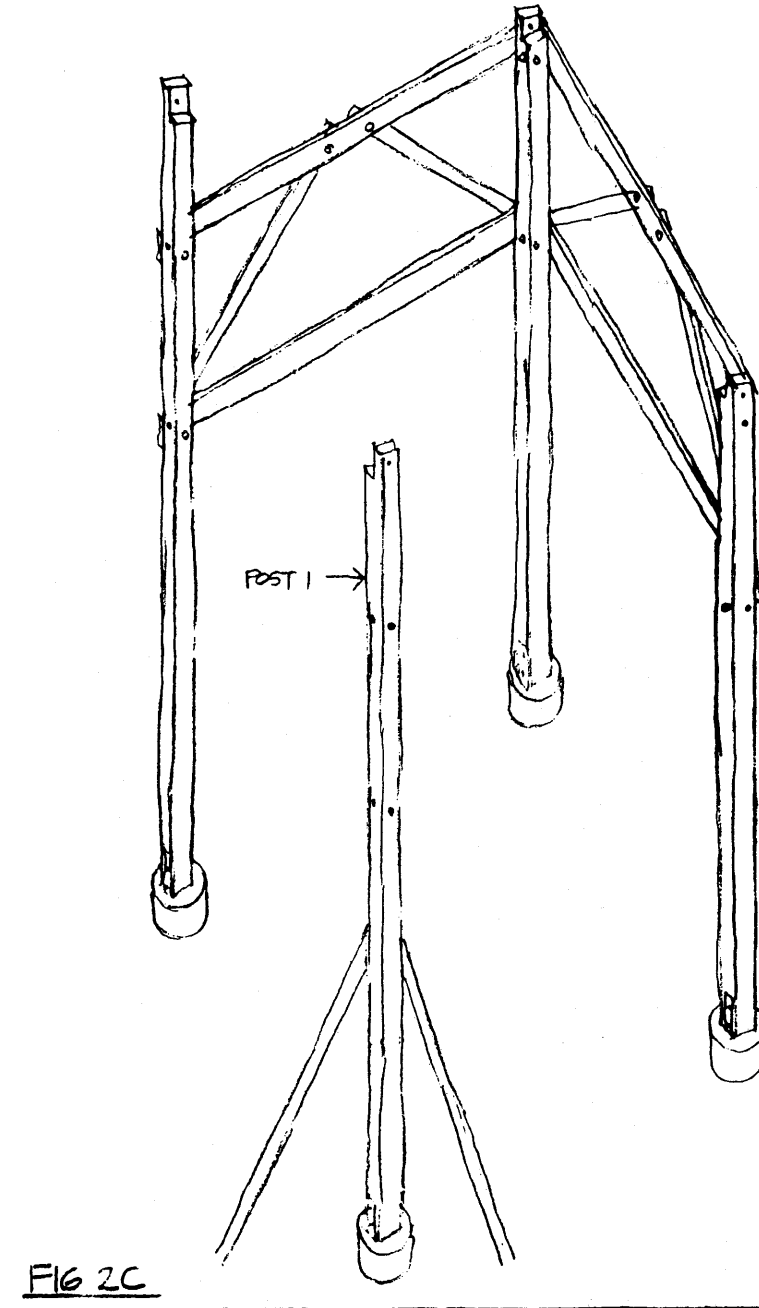


FIG. 2C



foundations

THE FOUNDATIONS CONSIST OF 4 CONCRETE PIERS, EACH WITH A STEEL TIE DOWN STRAP TO HOLD THE POST.

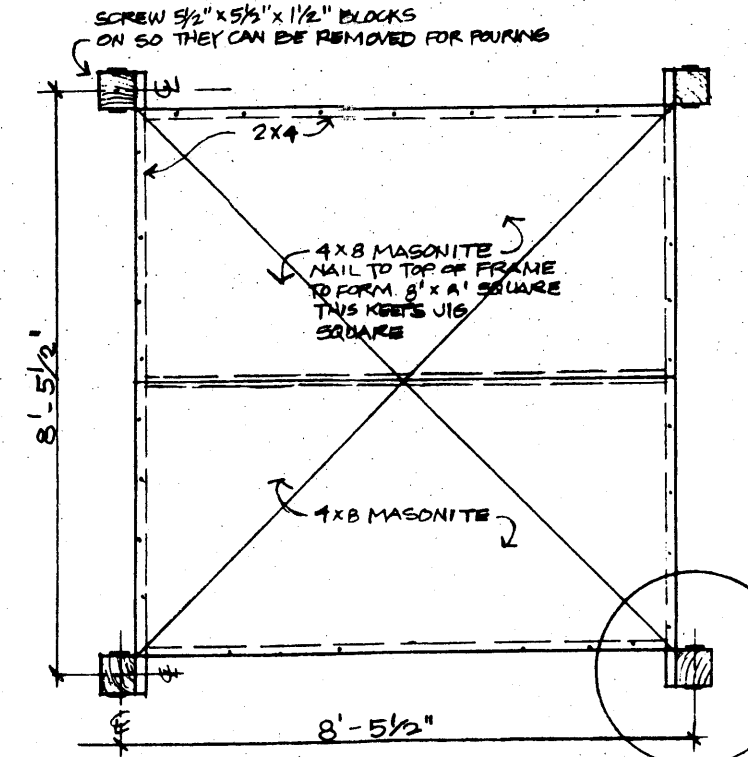
DIG 4 HOLES AS SHOWN @ 3'-5 1/2" CENTERS FOUR THE 10" TH. PAD & PLACE THE REINFORCING BAR AS SHOWN. PUSH A BLOCK OF WOOD INTO CENTER OF PAD TO MAKE KEY FOR PIER. ALLOW CONC. PADS TO SET (1 DAY). REMOVE KEY BLOCK, SET UP JIG AS DESCRIBED BELOW, PLACE CARDBOARD SAND TUBES ON PAD & POUR PIER. PUSH SIMPSON STRAP INTO POSITION & SECURE TO JIG.

SINCE THE FOUNDATION STRAPS MUST BE EXACTLY LOCATED AT THIS OF POURING, A JIG MUST BE BUILT TO TEMPORARILY HOLD THE STRAPS LEVEL, & SQUARE WHILE THE CONCRETE SETS.

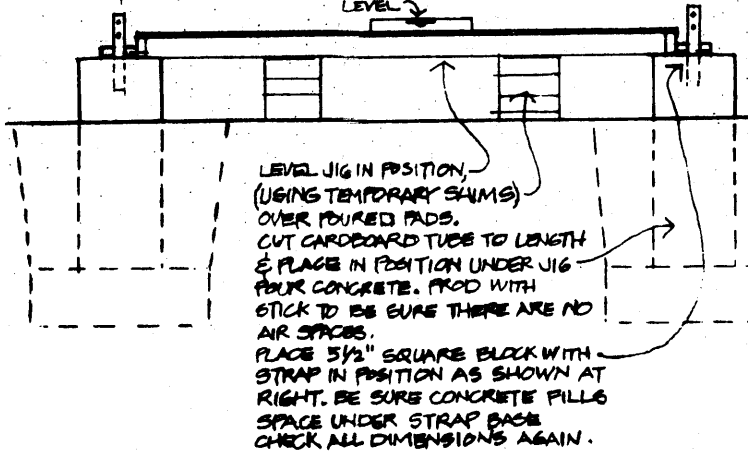
MATERIALS FOR JIG: (2) 2x4 x 8'-11" LONG
(3) 2x4 x 7'-9" "
(4) 5/2" x 5/2" x 1 1/2" BLOCKS
(2) 4x8 x 1/2" MASONITE.

NAIL JIG TOGETHER AS SHOWN. SET UP AS SHOWN BELOW.

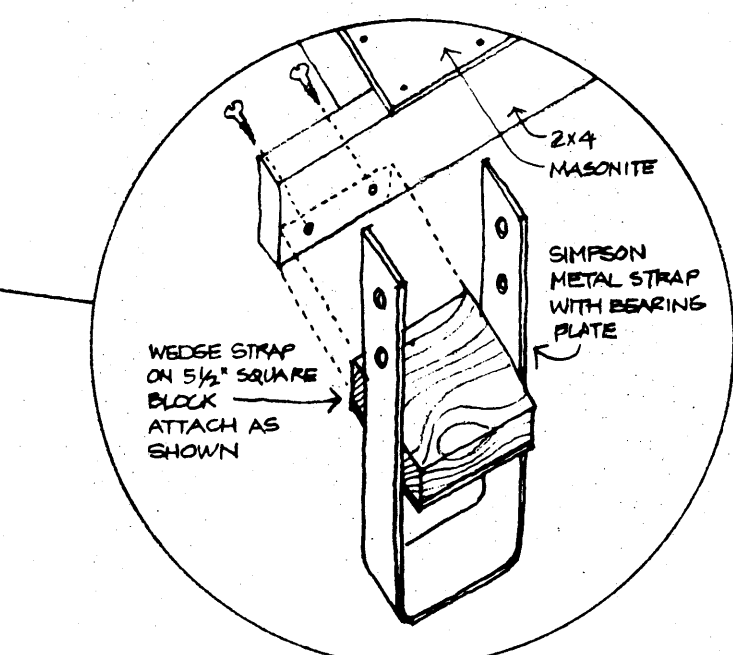
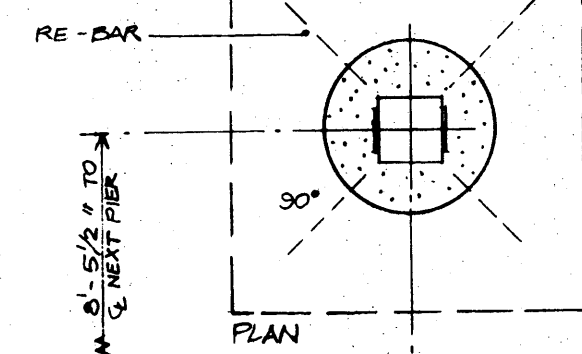
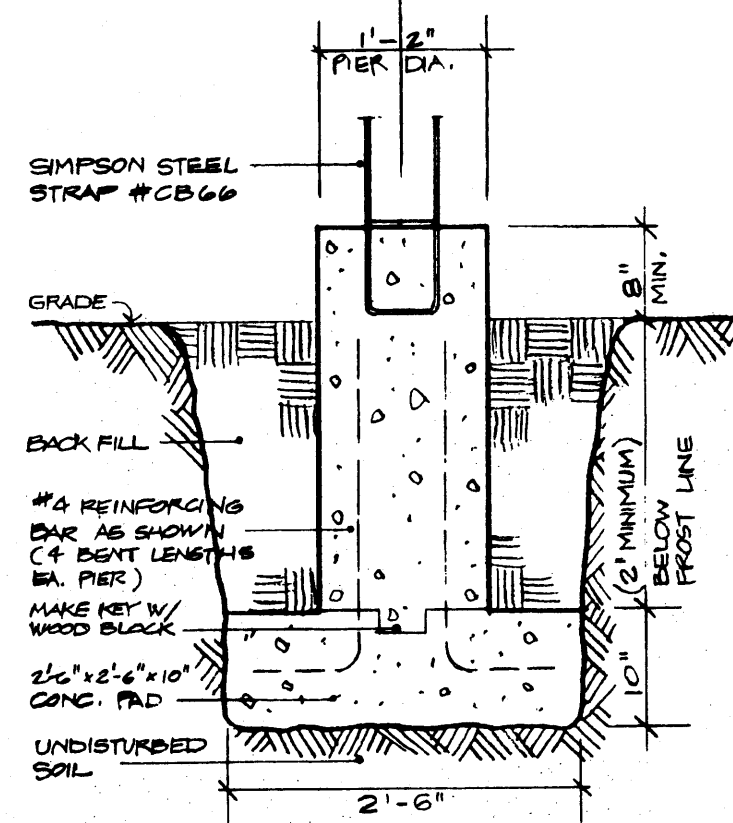
PLAN OF JIG



ELEVATION OF JIG



NOTE: IF SAND TUBE NOT AVAILABLE, MAKE TUBES WITH HEAVY BUILDING PAPER & WIRE WRAPPED AROUND TO HOLD IN PLACE.



NOTICE: These plans are out of date and are not offered for construction purposes. This structure was not designed for and does not meet building code standards. They are offered only for historical and artistic interest. 2006 www.PlanHelp.com

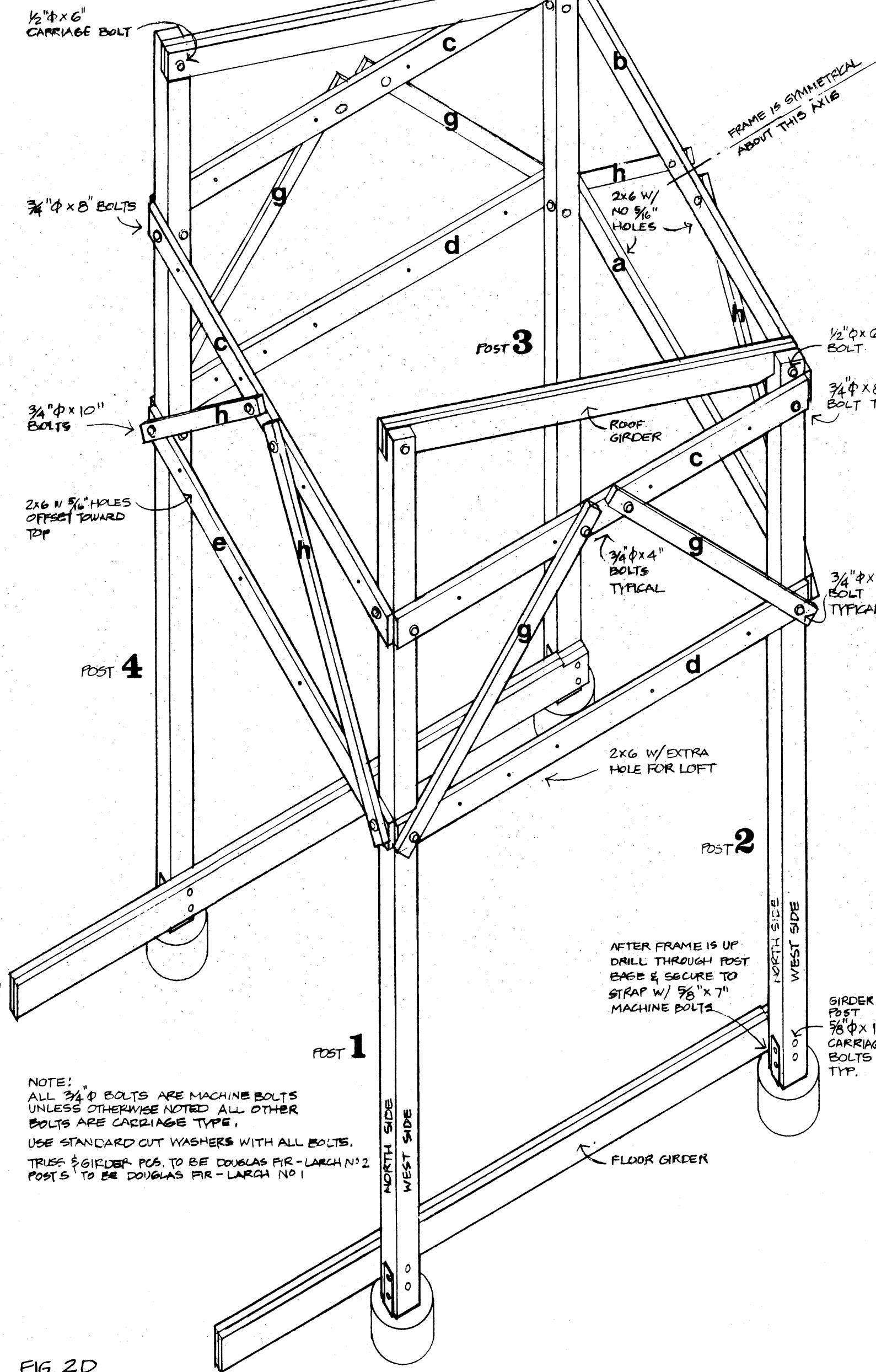


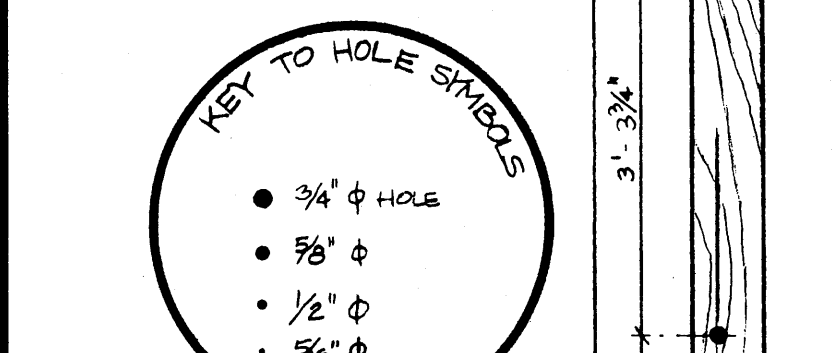
FIG. 2D

frame parts

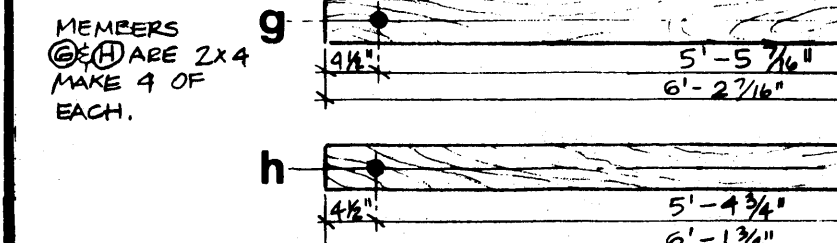
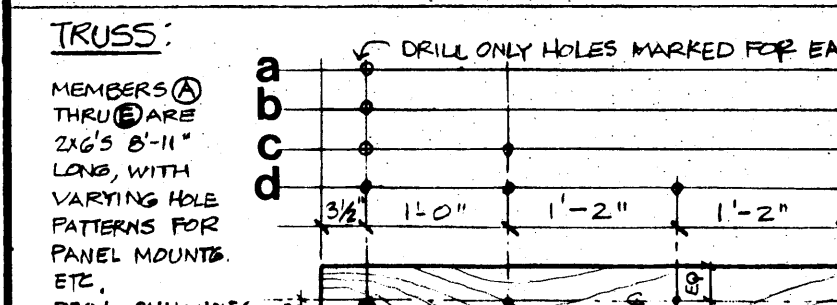
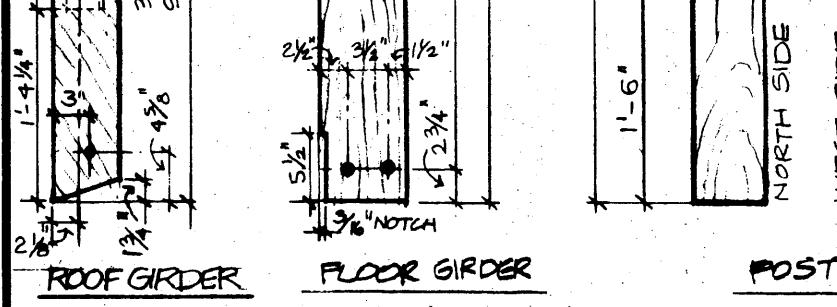
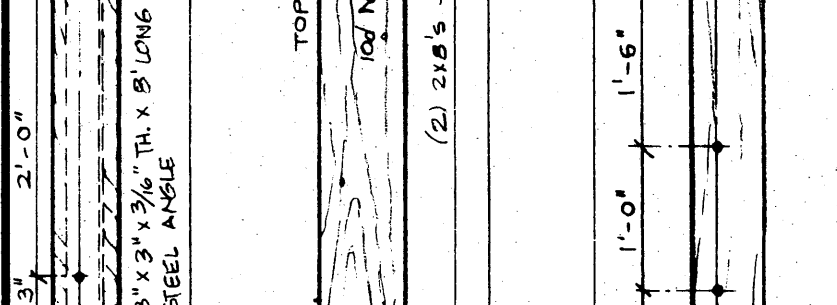
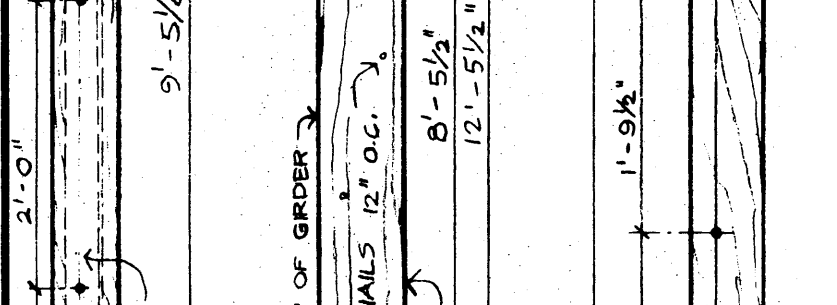
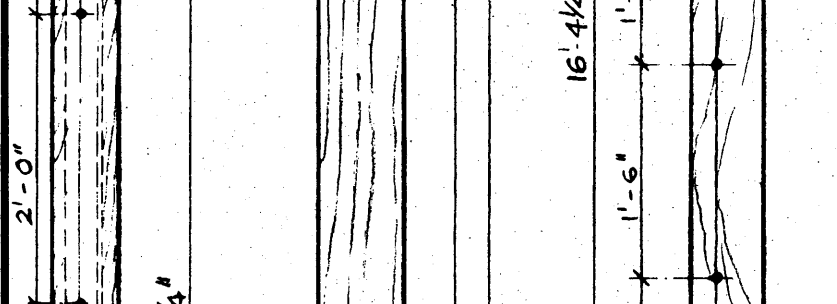
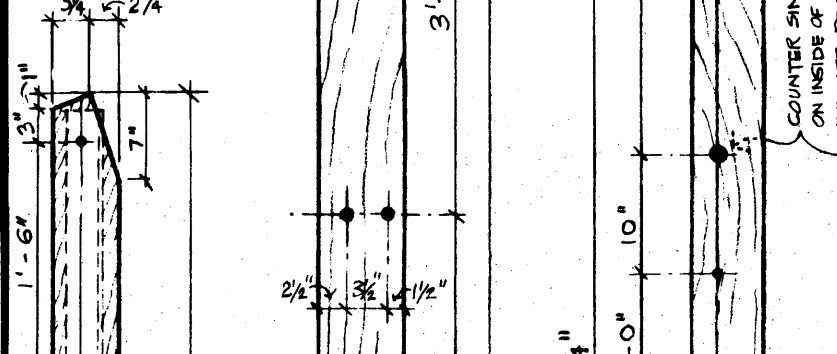
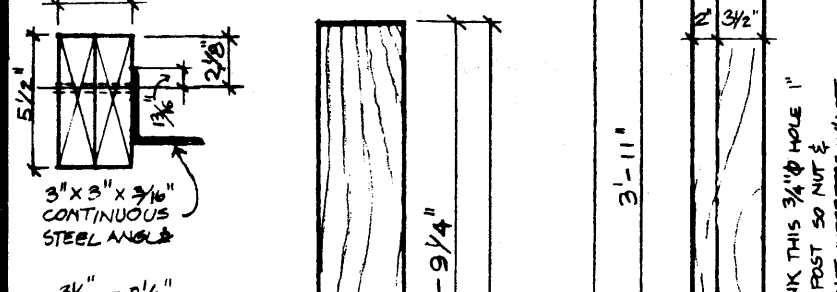
THE FRAME IS MADE UP OF 4 POSTS & A SERIES OF MEMBERS WHICH BOLT TOGETHER FORMING A RIGID TRUSS AROUND THE POSTS. STUDY THE ISOMETRIC SO THAT THE PARTS ARE UNDERSTOOD. POSTS:

THE POSTS ARE MADE FROM 6X6 TIMBERS (ACTUAL DIM. 5 1/2" x 5 1/2"). THE DRAWING BELOW SHOWS POST NOS 1 & 2. POST NOS 3 & 4 ARE MIRROR IMAGES OF POSTS 1 & 2 RESPECTIVELY. DO NOT MAKE IDENTICAL POSTS - MAKE MIRROR IMAGES - STUDY THE ISOMETRIC & SECTION 1.

CUT NOTCHES IN THE TOPS AS SHOWN (TO RECEIVE ROOF GIRDERS) & CAREFULLY LAYOUT & DRILL ALL HOLES (SEE KEY). ACCURACY IS IMPORTANT & A DRILL PRESS OR STAND SHOULD BE USED. TAKE A 5/2" x 8" LONG PIECE OF 1/2" PLYWOOD & MAKE A TEMPLATE FOR THE 1/2" POST HOLES.



SECTION THRU ROOF GIRDER



TRUSS: THE TRUSS PIECES ARE MADE FROM 2X4'S (THE DIAGONAL MEMBERS) & 2X6'S (HORIZONTAL MEMBERS). MAKE PIECES AS SHOWN IN THE DWG. BELOW FLOOR GIRDER: MAKE EACH FLOOR GIRDER AS SHOWN BY NAILING 2 2X8'S TOGETHER. IT IS VERY IMPORTANT THAT THE DISTANCE BETWEEN THE PAIRS OF 5/8\"/>

ROOF GIRDER: EACH ROOF GIRDER IS MADE BY NAILING TOGETHER 2 2X6'S. AT THE SAME TIME THE 1/2\"/>

SOAK BOTTOMS OF POSTS & BOLT HOLES WITH PAINTABLE WOOD PRESERVATIVE. PAINT ALL FRAME MEMBERS WITH A GOOD PRIMER & OIL PAINT.

